

## Meteorological Services

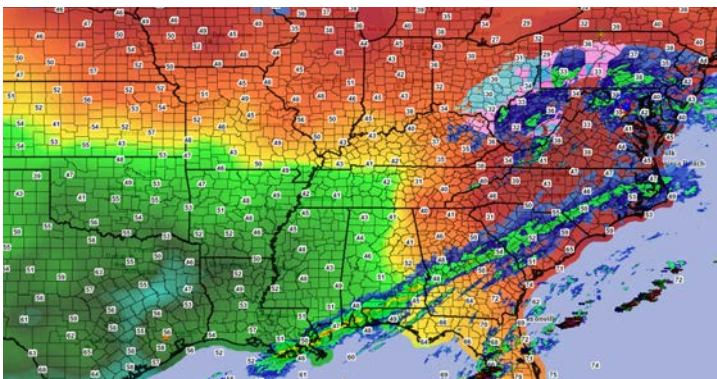
Know Before™ With the Industry's Most Up-to-Date Weather Team



Earth Networks-WeatherBug Meteorological Services provide assistance to organizations that need guidance from trusted experts in the weather field. Our 24/7 team of veteran meteorologists provides customized real-time weather consulting to help your organization make better weather-related operational decisions and assist in protecting lives and property.

### Cutting-Edge Custom Meteorological Consulting and Forecasts

Earth Networks - WeatherBug meteorologists have access to cutting-edge forecast tools and technologies...



Trusted meteorologists use real-time weather and lightning data to provide timely and insightful consultations to help you better manage your operations.

#### *Pinpoint Hourly Forecasts and Nowcasts*

WeatherBug owns and operates the largest weather network with over 10,000 weather stations reporting real-time data—this allows for pinpoint hourly forecasts and precise nowcasts. Our in-house forecast system infuses real-time, neighborhood-level weather and lightning observations into high-resolution global models, allowing our meteorologists to provide clients with a new standard for accurate hourly forecasts and nowcasts.

#### *Keeping Ahead of Dangerous Weather*

Exclusive technologies that combine the world's most accurate models with advanced algorithms enable Earth Networks - WeatherBug meteorologists to anticipate heat waves, cold blasts and flooding beyond the range covered by traditional weather models—providing clients the visibility needed for business continuity and critical decisions.

#### *Premium Tropical and Seasonal Forecasts*

Earth Networks - WeatherBug meteorologists leverage advanced research and in-depth historical analysis to give you earlier warning of the potential for tropical storm and hurricane development, and to produce the industry's most useful and detailed seasonal outlooks.

## Event Forecasts and Advanced Warning

From state fairs to sporting events, Earth Networks - WeatherBug meteorologists are available 24/7 for real-time weather consulting customized to your event...



Receive the earliest possible warning of severe weather threatening your event.

### *Your Event, Your Forecast*

Earth Networks - WeatherBug meteorologists analyze the latest model data, real-time neighborhood-level observations and lightning in the atmosphere to develop a forecast specific to the location of your event and effectively communicate the likelihood of different scenarios.

### *Advanced Warning*

Leading up to and during your event, Earth Networks - WeatherBug meteorologists monitor radar, National Weather Service warnings, and proprietary data from the Earth Networks - WeatherBug Total Lightning Network. The Earth Networks - WeatherBug team provides you the earliest possible warning of disruptive or dangerous conditions like lightning, high winds, heavy rain, hail and tornadic activity.

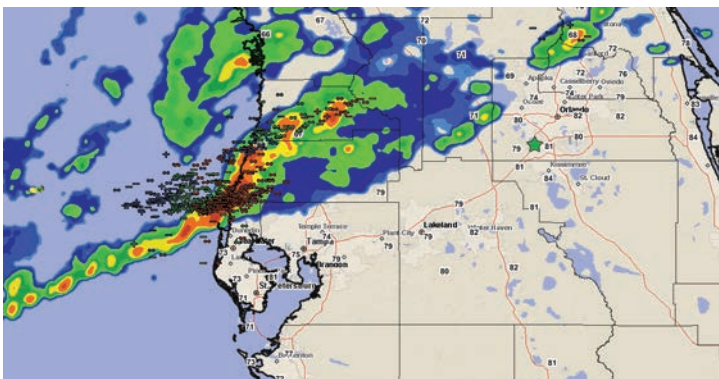


### *On Call 24/7*

An experienced team of meteorologists is available 24 hours a day, 7 days a week, to talk with you before or during your event about the forecast, how the weather may impact your event, and any imminent weather threats.

## Detailed Storm Briefings

Earth Networks - WeatherBug meteorologists are available to provide detailed and comprehensive briefings before, during and after the storm to help you determine when and how to act...



WeatherBug meteorologists have access to sophisticated tools like StreamerRT which provides to over 150 layers of weather data, including in-cloud and cloud-to-ground lightning.

### *Before the Storm*

Based on careful analysis of the latest model output and live observations, and many years of experience with past storms, Earth Networks - WeatherBug meteorologists clearly and effectively communicate the risk of storm surge, damaging winds, flooding, accumulating snow, or severe thunderstorms and tornadoes.

### *During the Storm*

Earth Networks - WeatherBug meteorologists use advanced weather visualization tools, the Earth Networks - WeatherBug Total Lightning Network and an exclusive neighborhood-level network of more than 10,000 weather

stations to track the storm and its impacts, and to keep you informed of lightning in your area and provide severe warnings including Earth Networks Dangerous Thunderstorm Alerts, which often provide advanced lead time over traditional warnings.

### *After the Storm*

Earth Networks - WeatherBug meteorologists compile detailed information on precipitation totals, observed wind gusts, and the location of lightning strikes to help guide your recovery efforts. We'll also keep you ahead of any inclement weather that could threaten crews out in the field.