

Know Before[™] with Advanced Safety Solutions

WHAT 9-year-old struck by lightning at JCSU

WHERE Johnson C. Smith University, Charlotte, NC

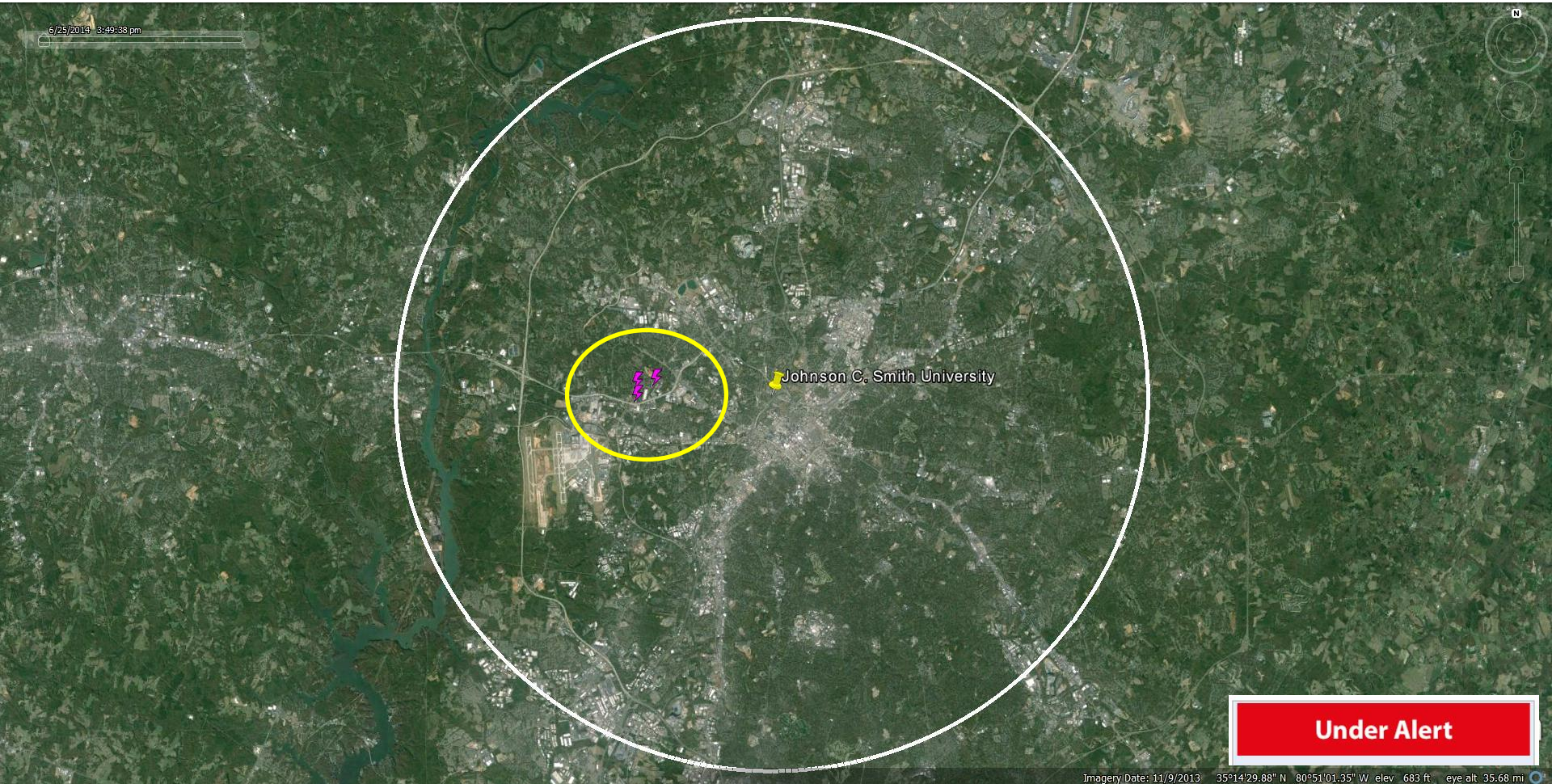
WHEN: Sunday, June 25, 2014

OUR ADVANCED ALERT: **6 MINUTES**



6 minutes prior to lightning striking child

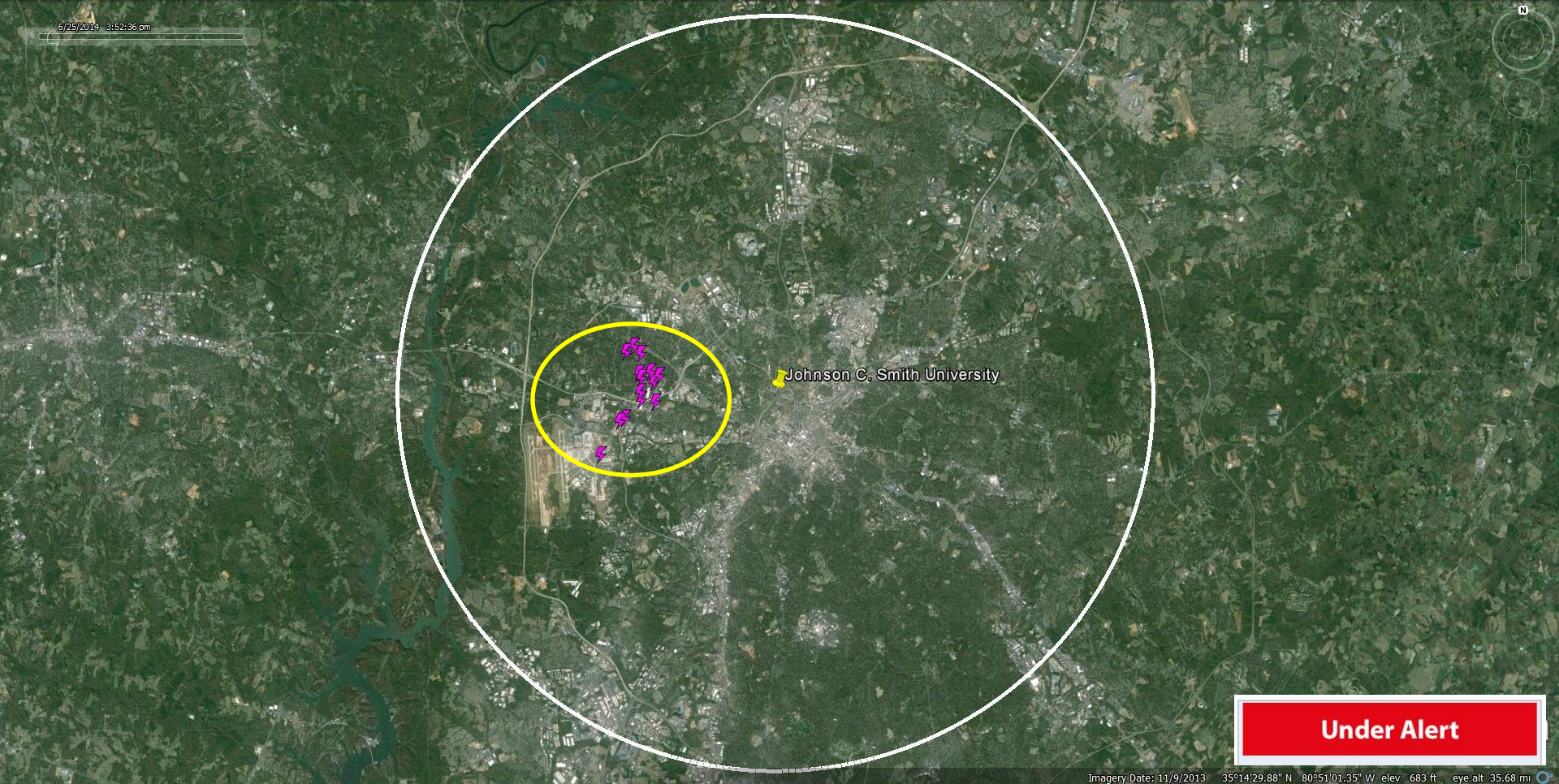
3:49 PM EDT – WeatherBug’s lightning network detects the first three in-cloud lightning (magenta) strikes within a 10-mile radius of the university .





3 minutes prior to lightning striking child

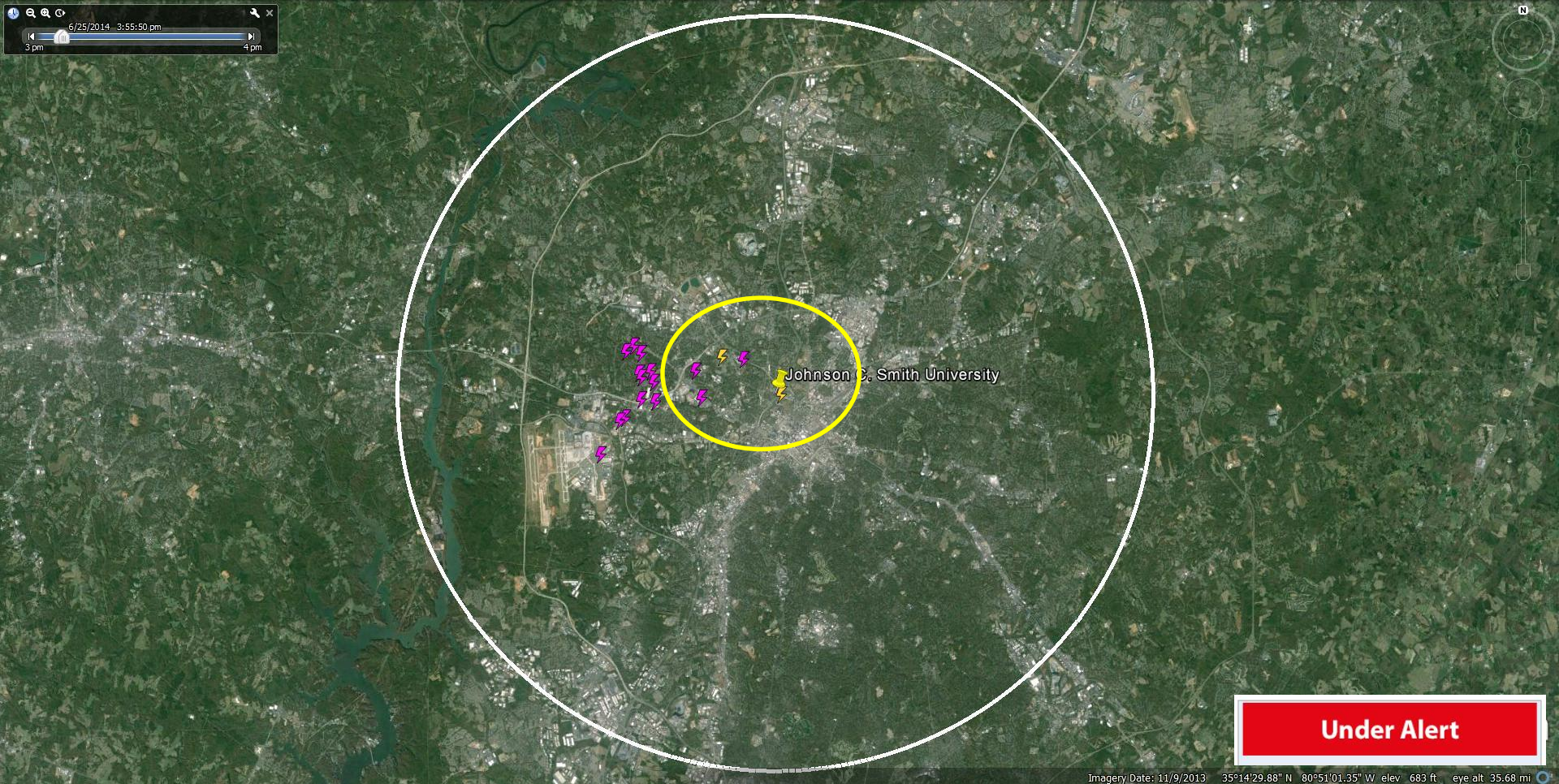
3:52 PM EDT – In-cloud lightning pulses continue and increase while moving toward the campus.



6/25/2014 3:52:36 pm

CLOUD-TO-GROUND LIGHTNING INJURES CHILD

3:55 PM EDT – The first cloud-to-ground (yellow) lightning strikes associated with this storm appear. One strike hits approximately 276 yards from where the injury occurred.

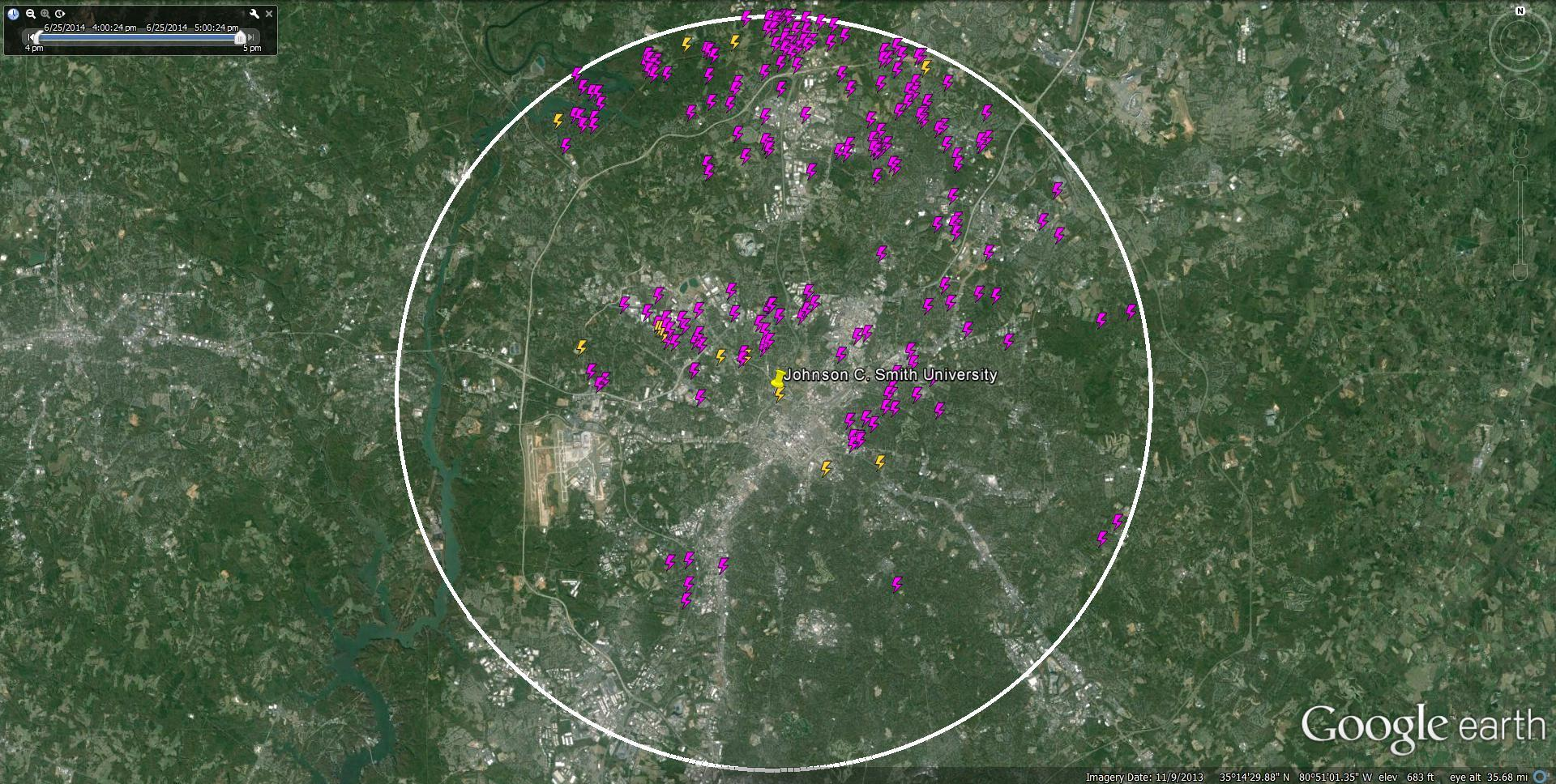


CLOUD-TO-GROUND LIGHTNING INJURES CHILD

3:55 PM EDT – The first cloud-to-ground (yellow) lightning strikes associated with this storm occur. One strike hits approximately 276 yards from where the injury occurred.



Total lightning detected during the event



This Event Demonstrates How Advanced Warning Can Help Save Lives



know beforeTM

The vast majority of lightning stays in the sky and jumps from cloud-to-cloud. Meteorologists and climate scientists have long known that this in-cloud lightning is an early sign of impending severe weather – including dangerous and even deadly cloud-to-ground strikes that kill 50 people, on average, in the U.S. every year and injure far more.

Knowing that in-cloud lightning plays a key role in the formation and intensity of many kinds of extreme weather, we established [the world's largest and most advanced lightning sensor network](#). The sensors in our network continuously **monitor, calculate** and **report** where and when lightning strikes occur in the clouds or on the ground – what meteorologists call **total lightning**.

Our advanced technology, based on state-of-the-art lightning sensors and networking technology, now makes it possible for us to provide our customers with **peace of mind** when storms with lightning are in the area.

On mobile: WeatherBug's Spark is the only mobile tool delivering minute-by-minute, mile-by-mile lightning strike information for [Android devices](#), [iPhone](#) and [iPad](#).

On PCs: [StreamerRT](#) is the most comprehensive and user-friendly tool available to visualize live and forecast weather conditions at local, regional, national and international levels for critical decision making.

Outdoors: [Outdoor mass notification system](#) for schools, parks, athletic facilities, stadiums and other outdoor venues where safety is a priority.