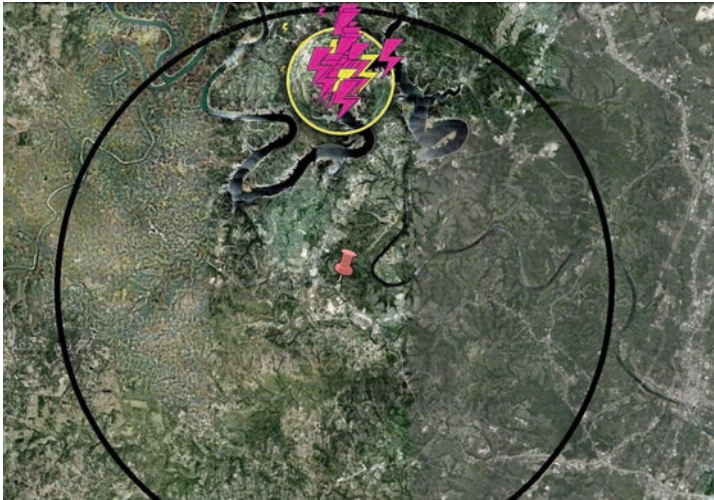


WeatherBug Safety Solutions In Action

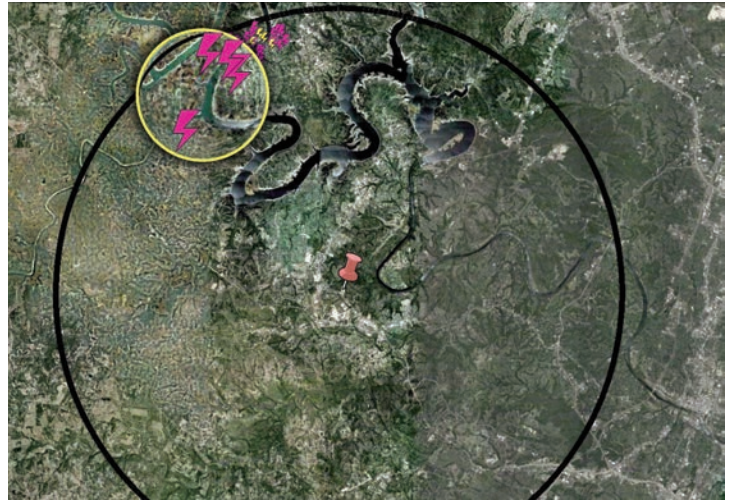
WHAT: Three injured in lightning strike near Bee Cave.

WHERE: Bee Cave, TX

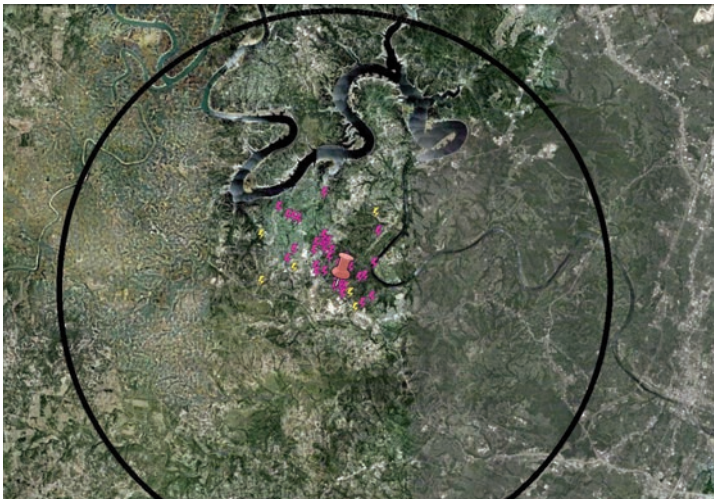
WHEN: Monday, April 29, 2013



1:20–1:50 PM – The first in-cloud (magenta) and cloud-to-ground (yellow) lightning strikes occurs 10 miles of the construction site – 1 hour and 18 minutes prior to injuries



2:05–2:25 PM – After 15-minutes of inactivity, in-cloud and cloud-to-ground lightning starts up again 10 miles of the construction site – 33 minutes prior to injuries.



2:35–2:38 PM – The actual lightning strikes that likely caused injuries (zoomed-out).



2:38:18 PM – The actual cloud-to-ground strike (yellow) that likely caused injuries is detected less than 300 meters away.

WeatherBug offered clients in the area 1 hour and 18 minutes of advanced warning.

There were no NWS alerts associated with this event.

This Event Demonstrates How Advanced Warning Can Help Save Lives

This event validates the tremendous value of TOTAL LIGHTNING. Total lightning data is critical and WeatherBug is the only provider that can detect TOTAL LIGHTNING at this level of precision.

WeatherBug equips management and personnel with a turnkey solution that constantly monitors dangerous weather conditions and issues customized alerts in real time. WeatherBug provides on-site detection and advanced alerts for lightning and severe weather to multiple locations via multiple methods—mobile devices, computers, indoor alerting devices and to outdoor alerting systems.