

WeatherBug Safety Solutions In Action

WHAT Horns alert golfers to lightning; lightning strikes the 13th green shortly thereafter.

WHERE Park Ridge Golf Course, Palm Beach, FL

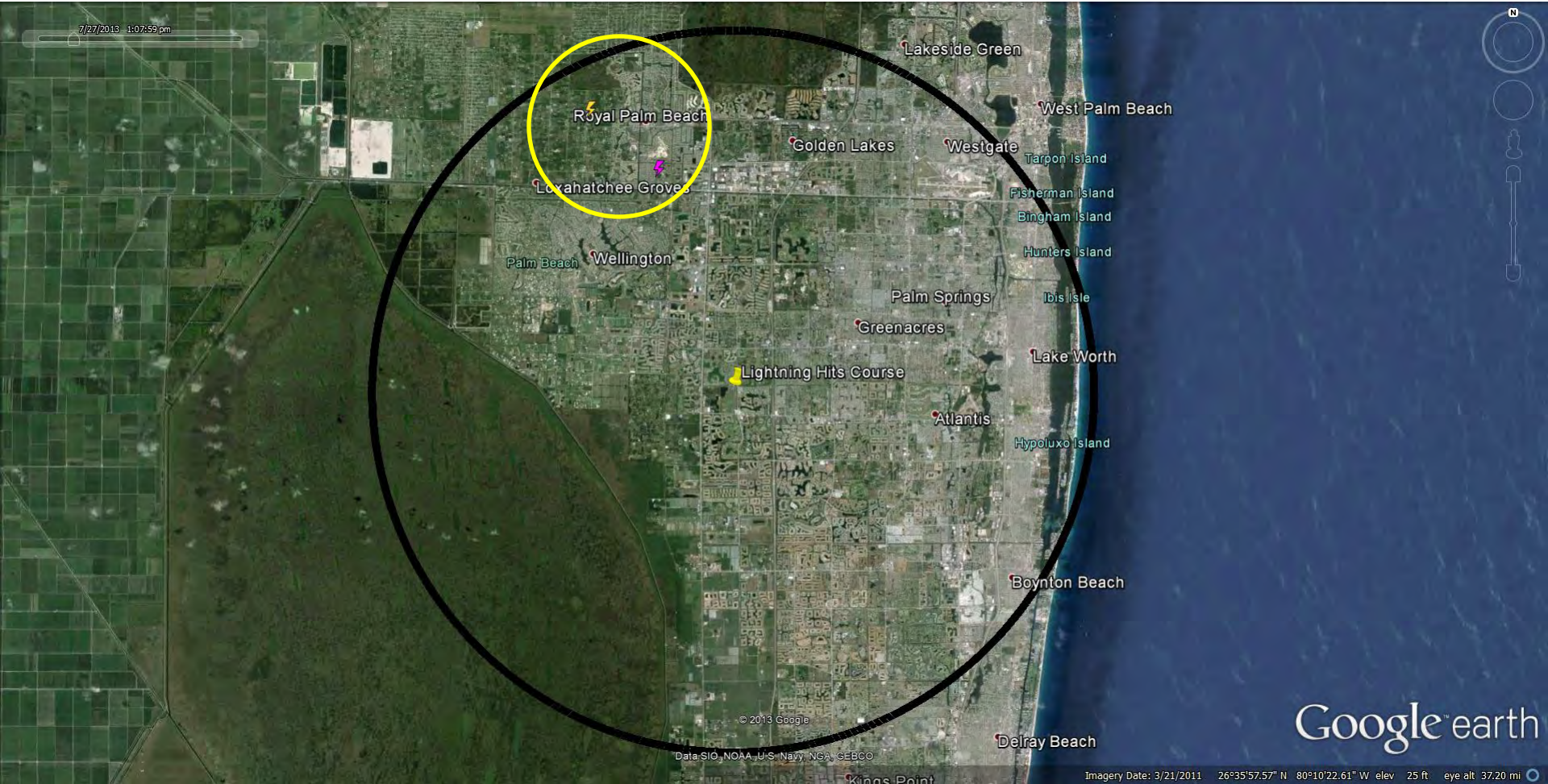
WHEN: Saturday, July 27, 2013 at 1:10 PM EST



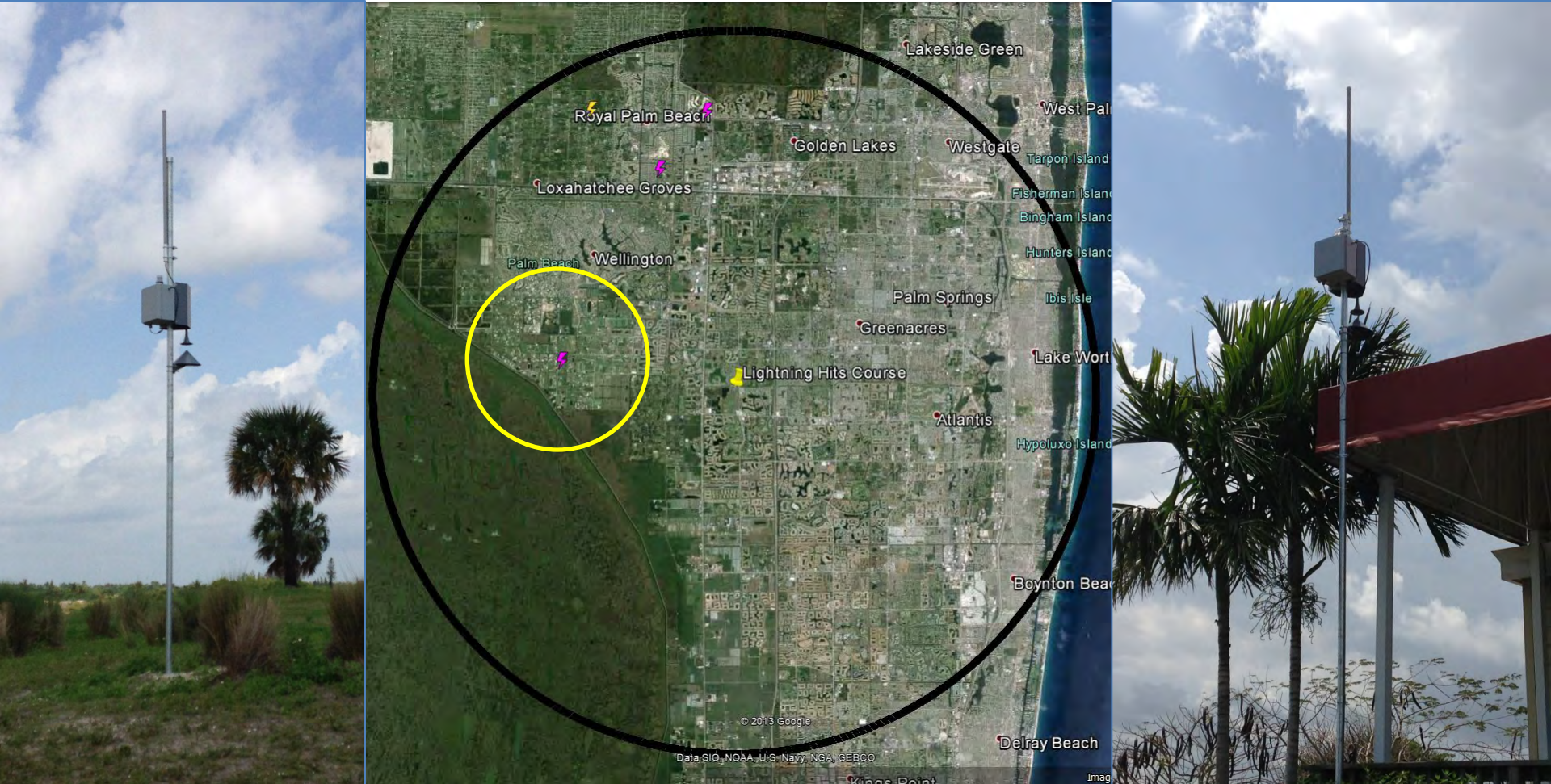
OUR ADVANCED ALERT: 25 minutes advanced warning provided.

28 minutes prior to strike on golf course

1:07 PM EST – In-cloud (magenta) and cloud-to-ground (yellow) lightning is detected within a 10 mile radius of golf club.



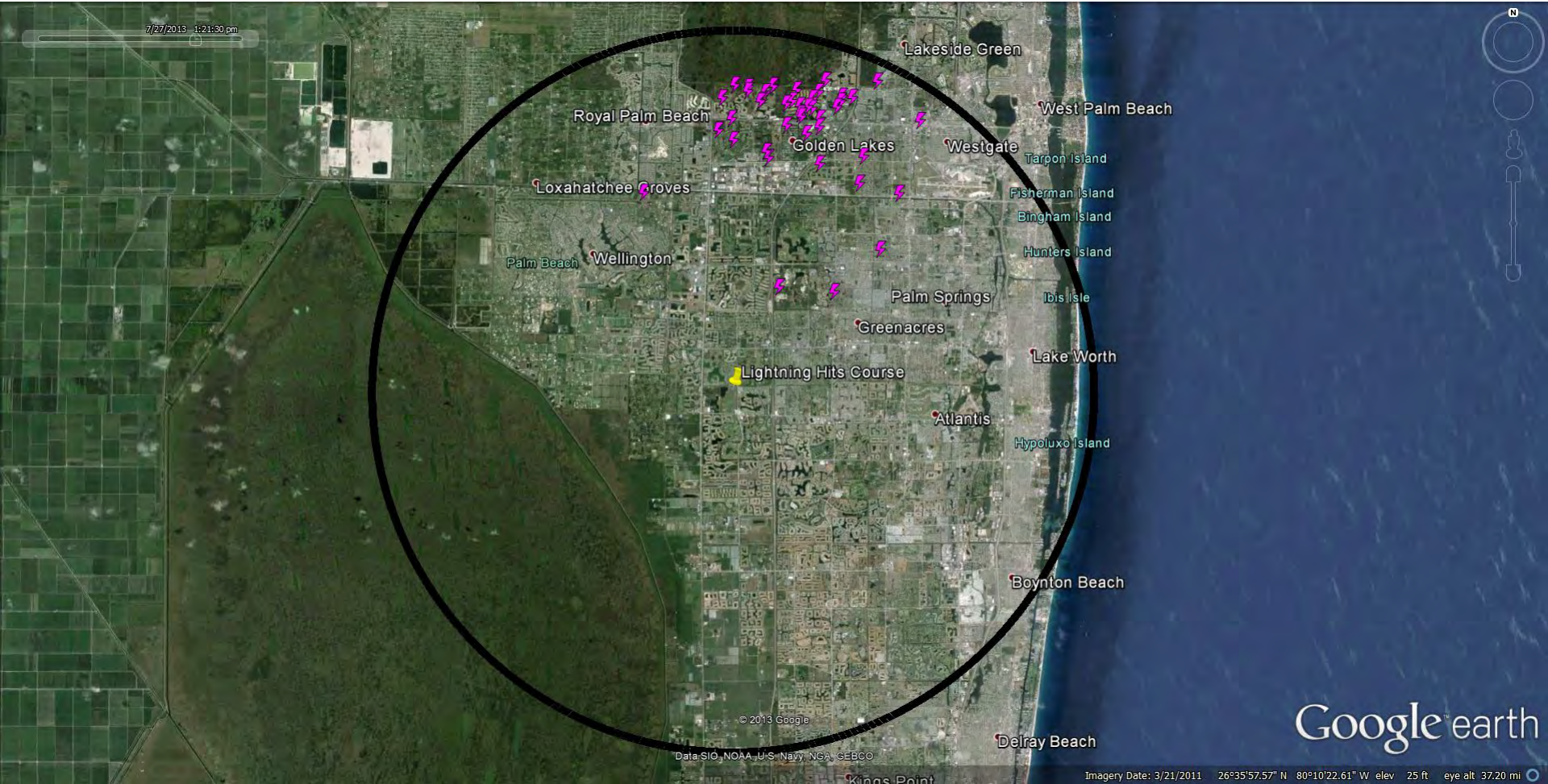
25 minutes prior – OUTDOOR ALERTING SYSTEM CLEARS COURSE
1:10 PM EST – In-cloud lightning detected within 6 miles of golf course – WeatherBug warns players to clear the course.



WeatherBug Outdoor Alerting System Sounds to Clear the Course

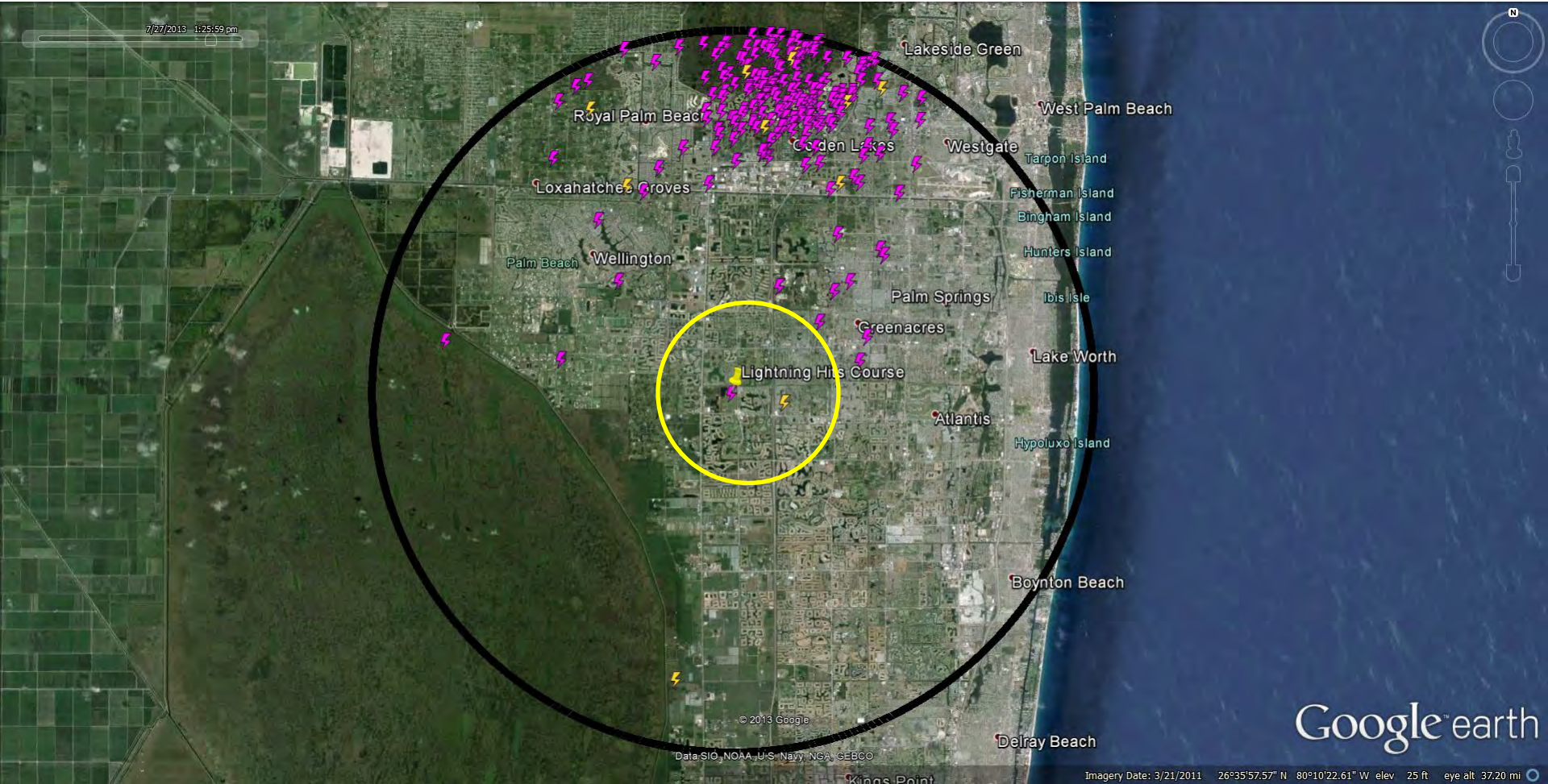
14 minutes prior to strike on golf course

2:21 PM EST – In-cloud lightning continues as the storm starts to develop.

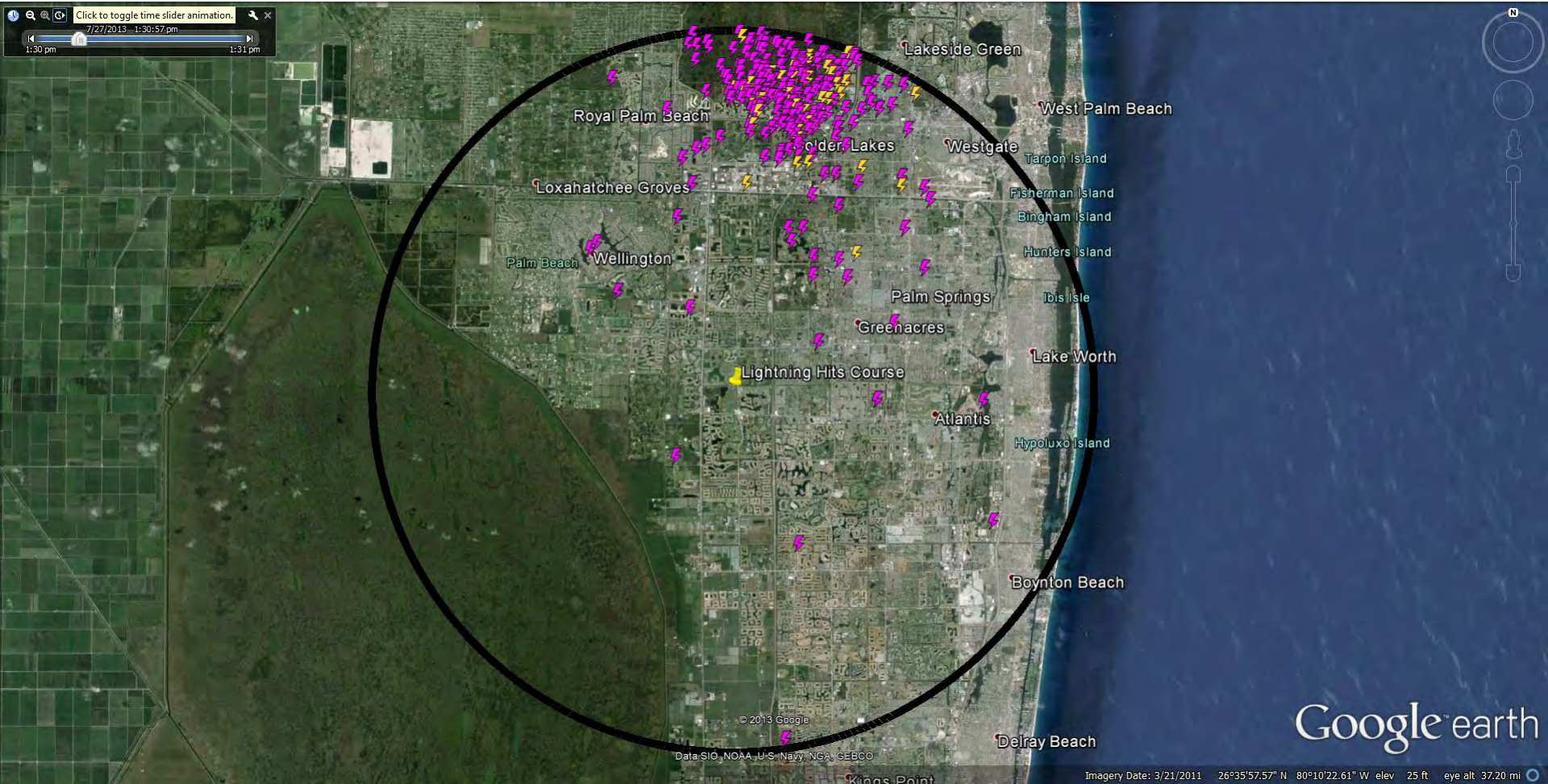


10 minutes prior to strike on golf course

2:25 PM EST – A cloud-to-ground strike is detected about 1.5 miles away; an in-cloud strike is detected directly over the golf course.

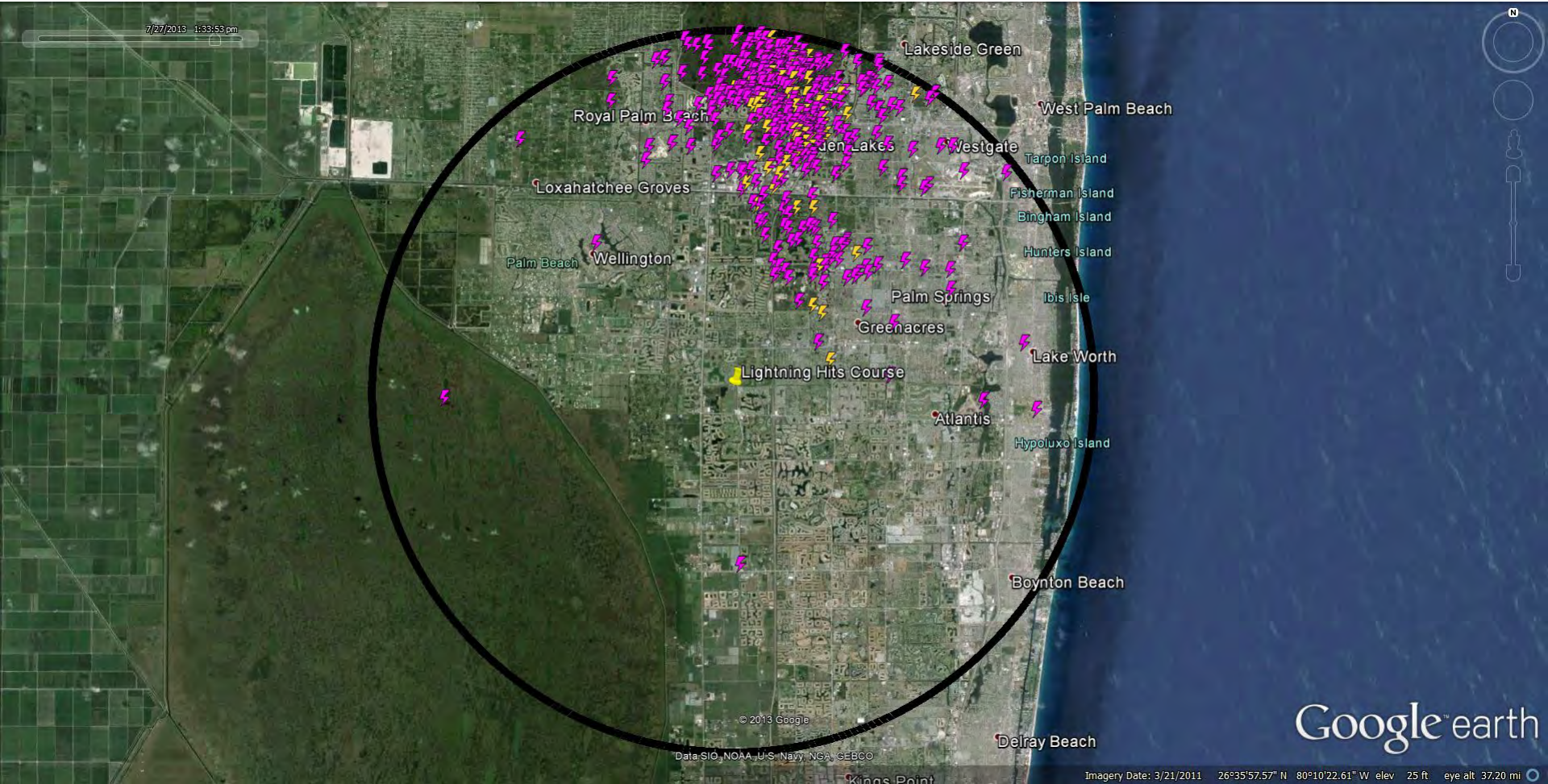


5 minutes prior to strike on golf course
2:30 PM EST – In-cloud and cloud-to-ground lightning develops rapidly within unsafe range of course.



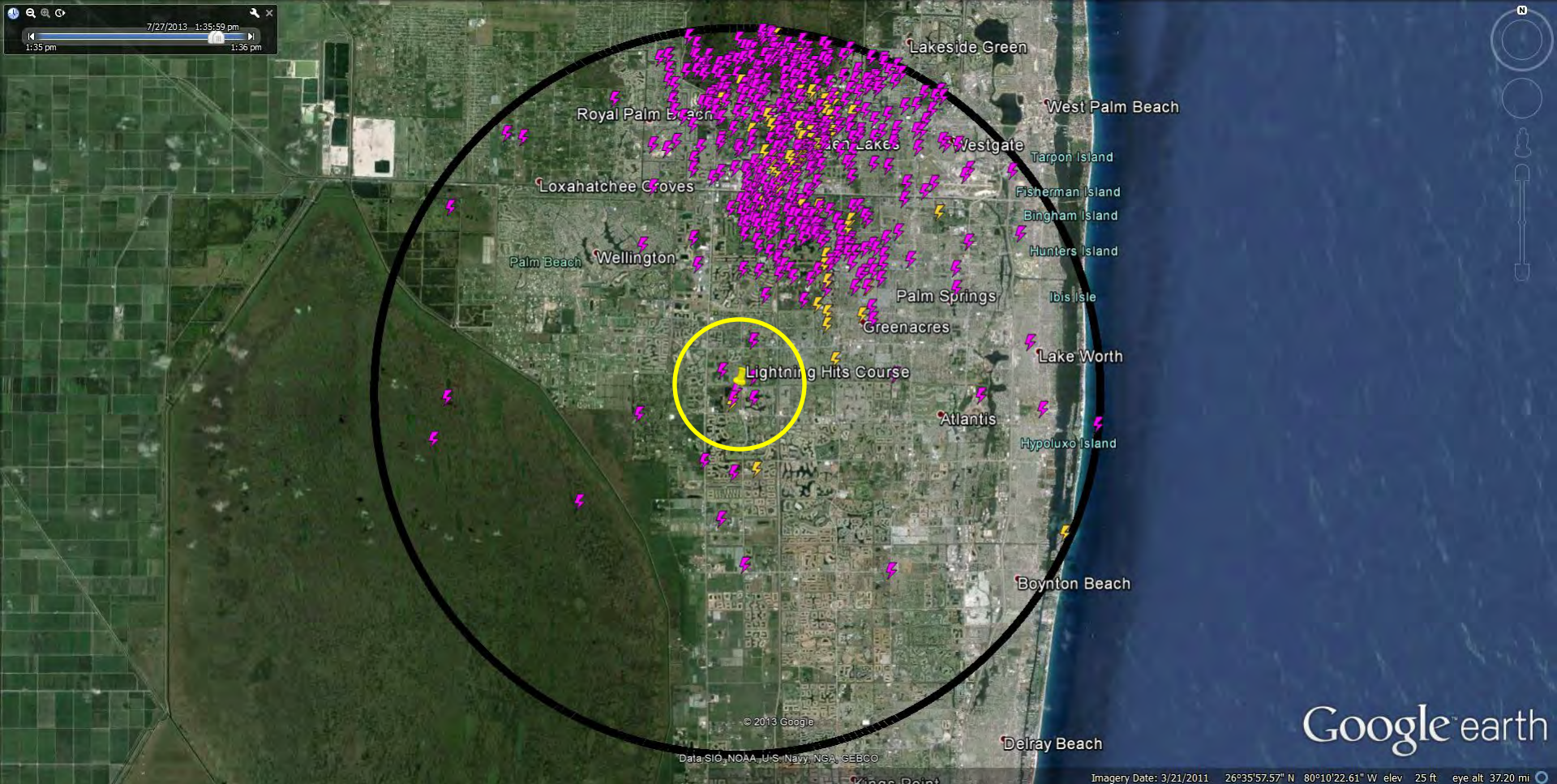
2 minutes prior to strike on golf course

2:33 PM EST – In-cloud and cloud-to-ground lightning strikes continue to intensify as it approaches the course.



Lightning Strikes Golf Course

2:35:19 PM EST – A cloud-to-ground lightning strike occurs directly on the course near the 13th green.



No injuries to report. Course evacuated 25 minutes prior.

Lightning Strikes Golf Course

2:35:19 PM EST – A cloud-to-ground lightning strike occurs directly on the course near the 13th green. The strike was detected 122 yards away – extremely precise for measurement of a cloud-to-ground lightning strike. Lightning rarely strikes perpendicular to the ground.

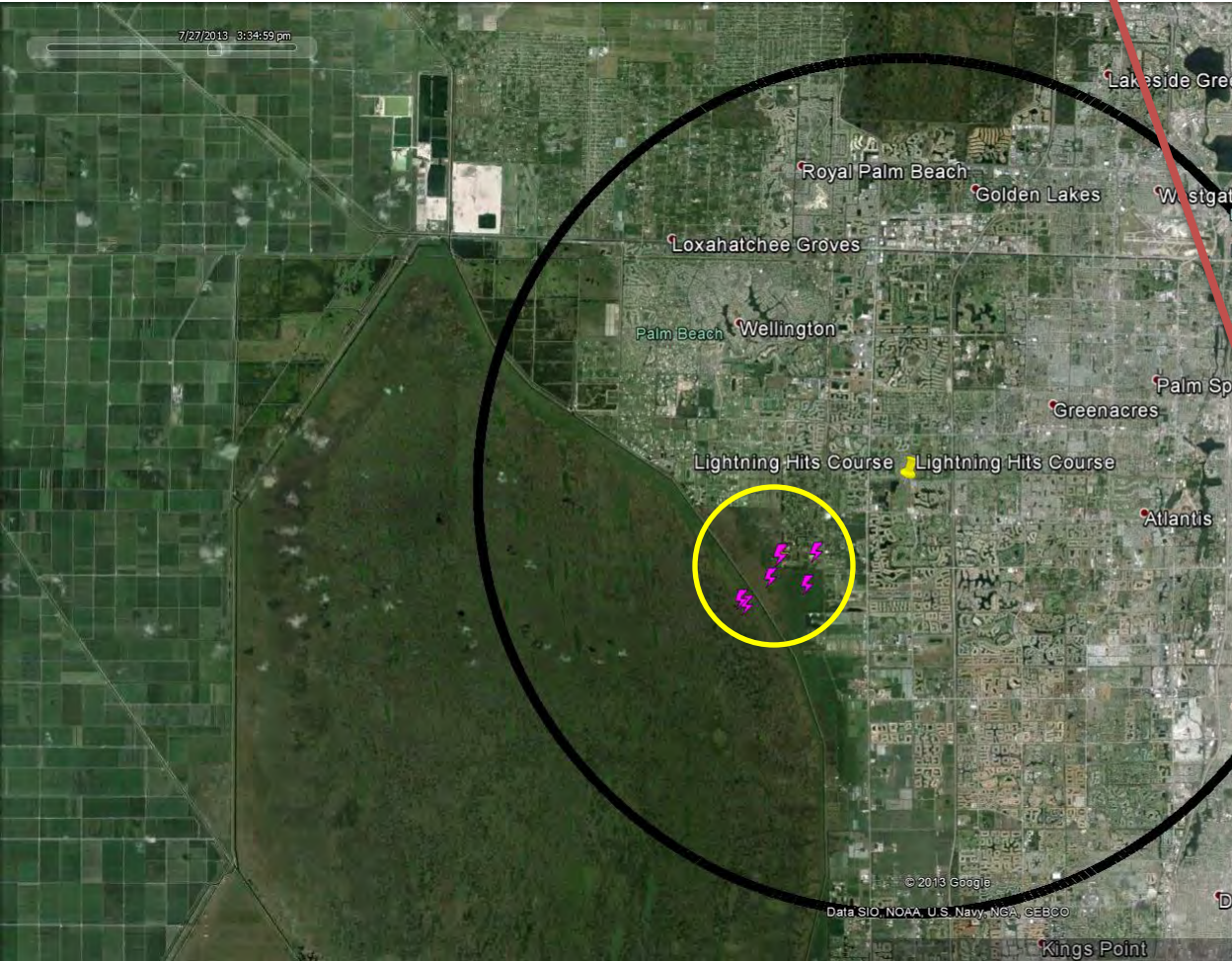


No injuries to report. Course evacuated 25 minutes prior.

Last of the Lightning

3:34 PM EST – The last few in-cloud strikes are detected. The automatic countdown timer starts.

4:04 PM EST – The WeatherBug Lightning Alerting sounds the **ALL CLEAR**. Play safely resumes.



Park Ridge Golf Course


Alerts	Connection
Under Alert	Up

Estimated Time to All Clear

HOURS	MINUTES	SECONDS
00	: 29	: 59

Last Stroke Time: 3:34:33
Last Stroke Distance: 2.58 miles

Hours of Operation: 6:00 AM - 8:00 PM



WeatherBug
By Earth Networks™

Park Ridge Golf Course


Alerts	Connection
No Alert	Up

Estimated Time to All Clear

HOURS	MINUTES	SECONDS
00	: 00	: 00

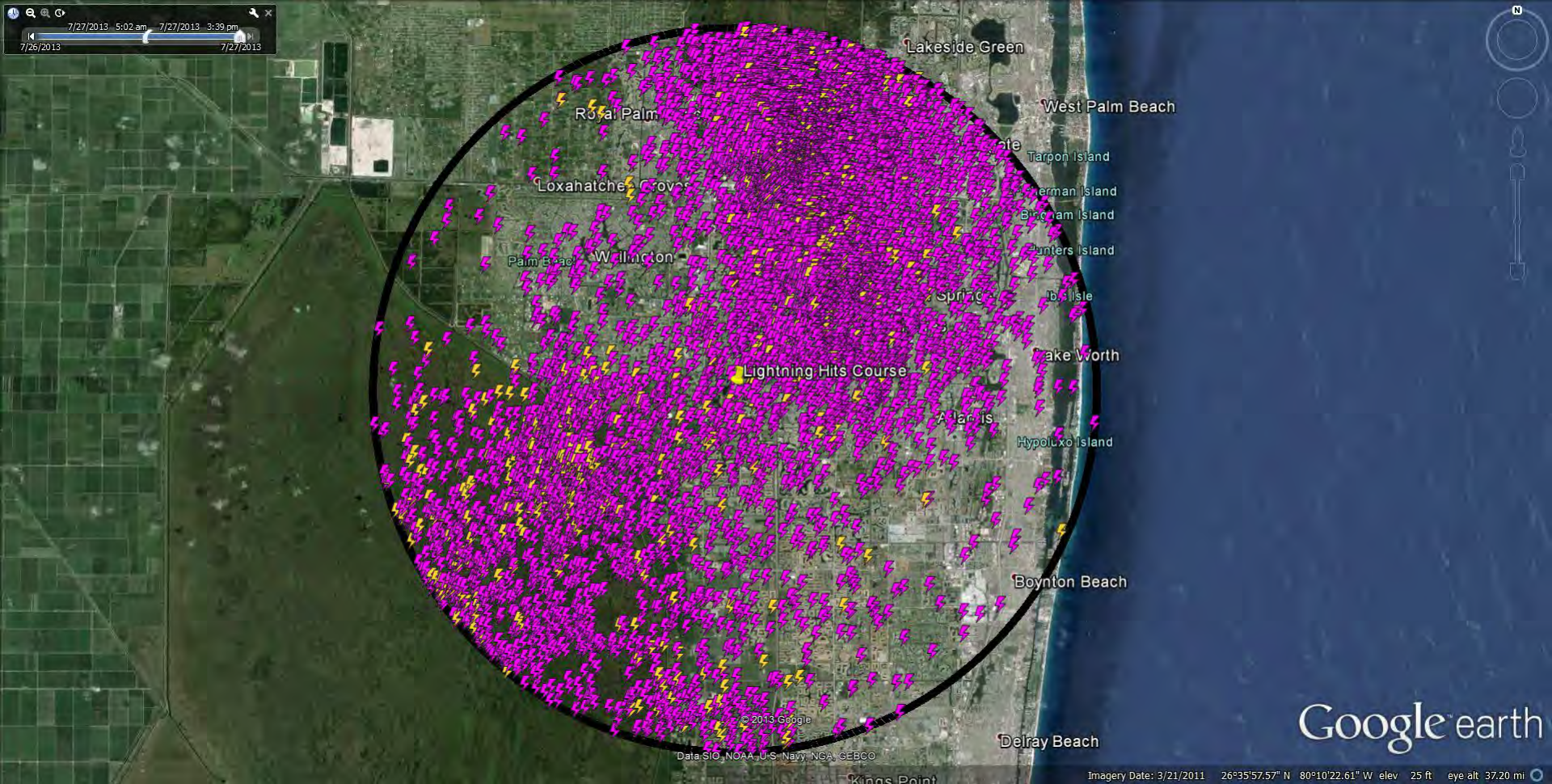
Last Stroke Time: 3:34:33
Last Stroke Distance: 2.58 miles

Hours of Operation: 6:00 AM - 8:00 PM



WeatherBug
By Earth Networks™

Total Lightning for the event.



This Event Demonstrates How Advanced Warning Can Help Save Lives



know before.SM

The vast majority of lightning stays in the sky and jumps from cloud-to-cloud. Meteorologists and climate scientists have long known that this in-cloud lightning is an early sign of impending severe weather – including dangerous and even deadly cloud-to-ground strikes that kill 50 people, on average, every year and injure far more.

Knowing that in-cloud lightning plays a key role in the formation and intensity of many kinds of extreme weather, we established [the world's largest and most advanced lightning sensor network](#). The sensors in our network continuously **monitor**, **calculate** and **report** where and when lightning strikes occur in the clouds or on the ground – what meteorologists call **total lightning**.

Our advanced technology based on state-of-the-art lightning sensors and networking technology now makes it possible for us to provide our customers with **peace of mind** when storms with lightning are in the area.

On mobile: WeatherBug's Spark is the only mobile tool delivering minute-by-minute, mile-by-mile lightning strike information for [Android devices](#), [iPhone](#) and [iPad](#).

On PCs: [StreamerRT](#) is the most comprehensive and user-friendly tool available to visualize live and forecast weather conditions at local, regional, national and international levels for critical decision-making.

Outdoors: [Outdoor mass notification system](#) for schools, parks, athletic facilities, stadiums and other outdoor venues where safety is a priority.