

# Enterprise Solutions


Comprehensive severe weather intelligence for planning, detection, response and recovery

### Neighborhood-Level Weather



World's largest weather network, including 10,000 stations exclusive to Earth Networks-WeatherBug that update every 2 seconds.

### Total Lightning



World's largest lightning network, and the first to comprehensively capture both cloud-to-ground and in-cloud lightning for advanced warning.

### Expert Weather Team



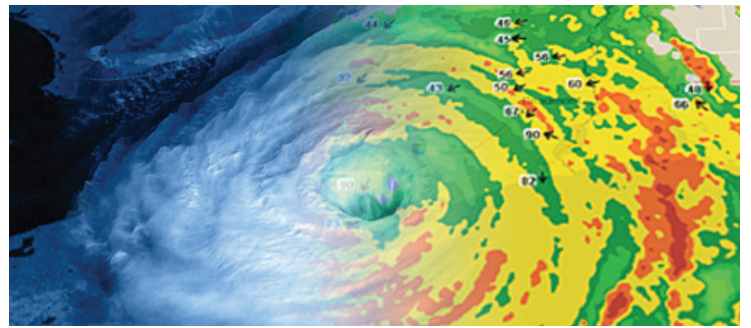
24/7 access to an experienced team of meteorologists for customized real-time weather consulting during severe weather and major events.

## Planning



- Identify all potential weather threats
- Prepare action plans based on expected weather conditions
- Strategically position personnel and resources
- Reduce risk to employees and customers

## Detection



- Get the earliest possible warning of the potential for severe weather
- Receive instant severe weather alerts and custom notifications
- Visualize the weather in real-time at the neighborhood level
- Activate severe weather plans

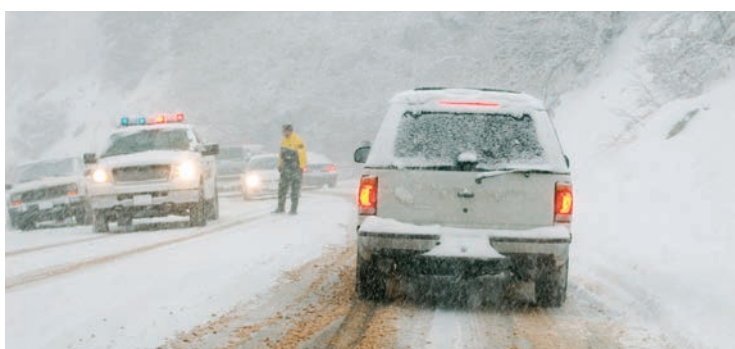
## Response

- Identify where conditions are most severe
- Deploy crews and equipment where they are needed most
- Determine whether to evacuate and what to communicate to the public
- Maintain essential operations and services



## Recovery

- Keep recovery crews safe
- Anticipate additional weather threats
- Assess preparation and response efforts
- Resume full operations as soon as possible



# Enterprise Solutions

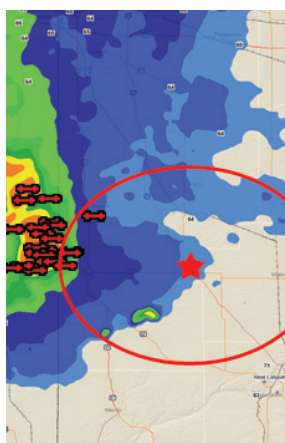
Comprehensive severe weather intelligence for planning, detection, response and recovery

## From the Sensor to the App...

The **Earth Networks-WeatherBug Weather Station** is a commercial-grade weather station built to withstand all weather conditions. It is easily installed and records 27 different weather measurements updated every 2 seconds. The Earth Networks-WeatherBug Weather Station integrates with the following solutions to provide a comprehensive program for planning, detection, response and recovery.



### Real-Time Visualization



#### StreamerRT<sup>SM</sup>

Access more than 150 layers of real-time weather information and severe alerts, including live data from an exclusive neighborhood-level network of more than 10,000 weather stations. This web-based weather intelligence platform brings the highest level of precision to the tracking and analysis of weather for rapid visualization and decision-making.

### Live Streaming Views



#### Weather Cameras

HD cameras provide a true picture of what's happening on the ground and help monitor critical assets for improved daily operations.

### Live, Local Weather



#### LCD Weather Display

Display the latest live, local current conditions, forecast, animated radar and camera images from your on-site weather station to increase weather awareness throughout your facility.

### Early Warning & Alerting

#### Total Lightning



Outdoor Horn

Mobile Alerts

Indoor Notifications

Earth Networks-WeatherBug Total Lightning is the standard in reliability for in-cloud (IC) and cloud-to-ground (CG) lightning detection.

#### Early Warning Can Make the Difference

Detection of IC is critical for advanced warning of severe weather and deadly CG lightning strikes that often follow 5 to 30 minutes after IC flashes begin. Advanced warning increases your lead time to keep people safe and protect property.

#### Alerts Where and When You Need Them

Receive alerts to multiple locations via multiple methods—mobile devices, computers and to high-decibel outdoor horns. Avoid false alarms—strikes are monitored, confirmed and communicated.

### Community Information



#### Online Weather Center

Provide live weather data and detailed local forecasts on your website. Includes navigable maps, radar and satellite data.

### Experts On Call



#### 24/7 Meteorological Support

An expert team of experienced meteorologists is available around-the-clock for consultation and customized analysis of the weather for your location.