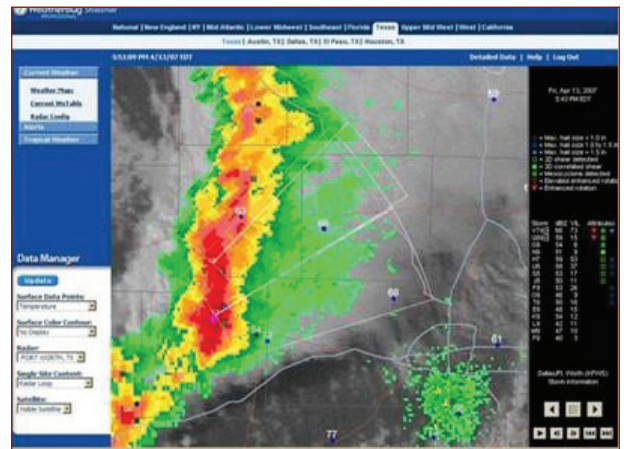


Dallas County Office of Emergency Management Implements WeatherBug Professional Solutions

"Products from WeatherBug Professional tell us what's happening in the immediate and surrounding areas in real-time, giving our office an ability to plan and coordinate emergency responses using instantaneous weather data," said Rodrick Jones, Emergency Management Coordinator, Dallas County Office of Emergency Management.

The Dallas County Office of Emergency Management (DCOEM) recently implemented several WeatherBug[®] Professional Tracking Stations, Streamer and Plume Modeling solutions within their Emergency Operations Center. The WeatherBug Professional First Responder Solutions provided Dallas County emergency response officials with actionable, live severe weather intelligence throughout the Spring and Summer of 2007. Last Spring, Dallas saw a record-setting year in terms of local storm activity. With the use of Streamer, emergency response personnel were able to track and analyze the dangerous storms with a higher level of precision for better preparation and response.

On July 25, 2007 live delivery of dynamic weather data from WeatherBug Professional also assisted DCOEM in plume modeling efforts during a dangerous BLEVE event which occurred less than a mile from the downtown Dallas business district. Using the WeatherBug Professional Plume Modeling Solution, personnel at DCOEM were able to monitor and track live weather conditions affecting 900,000 households located within the county. Pinpointing severe weather events and conditions ensures delivery of the Common Operating Picture required by local emergency response teams in the field.



Spring 2007. Thunderstorm activity within Dallas County.



Summer 2007. BLEVE event in downtown Dallas.

For more information on how the WeatherBug Professional First Responder Solutions can assist the response and recover operations in your community, visit: weatherbugprofessional.com