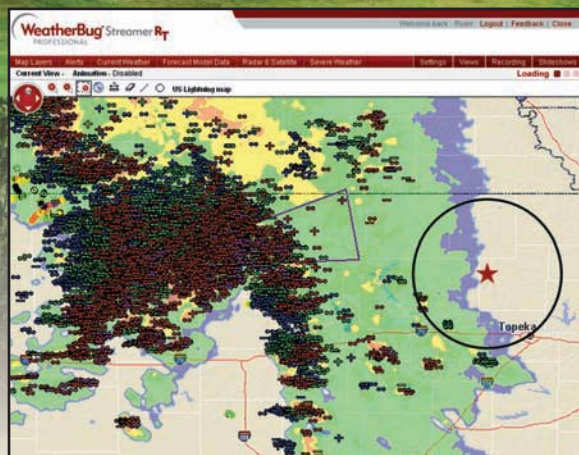


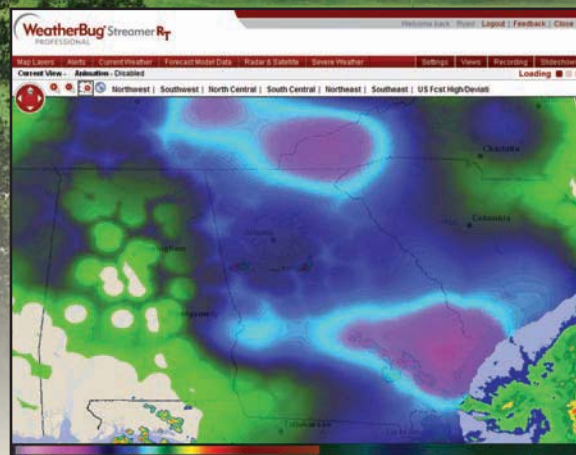
# StreamerRT

From accurate tee times to large-scale events, StreamerRT is the only solution that uses live, in-cloud and cloud-to-ground lightning and weather data from your facility and a national network of more than 8,000 Weather Stations to assist you in making critical and operational decisions. Be better prepared, make informed decisions, and keep members and club property safe.

This web-based weather intelligence platform brings you the highest level of precision to the tracking and analysis of severe weather.



StreamerRT shows a massive amount of in-cloud and cloud-to-ground lightning in the Central Plains. The circle with the star pinpoints a custom notification set-up for advanced warning.



StreamerRT shows a color contour for daily rain in the Southeast. The areas depicted in light blue and purple have received close to 1" of rainfall so far for the day.

## Protect Your Members and Employees

Now you can make accurate, weather-related decisions to safeguard members, guests, and employees. A must for outdoor activities and events, **StreamerRT** gives you the most robust weather visualization solution system available.

## Simplify Your Weather-Related Decisions

Live weather conditions with easy-to-interpret data, built-in alerts, and custom views enables you to make the right weather decisions. **StreamerRT** is the only weather application you need, just set your custom views and alerts and you are prepared.

## Improve Operations and Event Management

You need to be vigilant when holding outdoor activities and events. **StreamerRT** provides an unprecedented time and relevance advantage in order to plan for oncoming weather.

## Maximize Your Turf Management Efforts

**StreamerRT** helps you efficiently schedule your chemical applications and maximize turf management. Anticipate conditions with advanced forecast models to predict germination, disease, and pest activity by more accurately gauging rain accumulation. Adjust your schedule accordingly to conserve and use water more efficiently.







## State-of-the-Art Weather Visualization

StreamerRT gives club managers, golf professionals and superintendents a tool that helps protect members and manage operations by taking live lightning and weather data, precision tools, and customized views and alerts to the next level. Your time is at a premium and you shouldn't have to hunt for club-specific weather information. With StreamerRT, you set your views and alerts once—and the work is done.

### The Largest and Most Accurate Network

- WeatherBug is the world's largest real-time, commercial-grade weather network with more than 8,000 Weather Stations and 1,500 cameras.
- National Weather Service (NWS) adds more than 1,200 weather stations and the MADIS mesonet adds a final layer of more than 1,000 stations.

### Lightning

- Powered by WeatherBug Total Lightning – the standard in lightning and severe weather detection.
- The FIRST integrated in-cloud (IC) and cloud-to-ground (CG) lightning detection to be available on a nationwide basis.
- Incorporates highly advanced predictive capabilities that are crucial for characterizing severe storm precursors, improving lead times and comprehensive weather management planning.
- Displays strikes that occurred in the last 1, 15, 30, or 60 minutes.

### Radar and Satellite

- Current radar and forecast radar show you exactly where the bad weather is and where it is headed, with smooth non-pixelated imagery.
- Precipitation accumulation totals for 1, 3, 6, 12, and/or 24-hour periods.
- Doppler radar covering the entire continental U.S. is updated every 5 minutes.

### Custom Notifications

- Dynamic interface enables user to create notification rules for specific locations.
- Rules based on user defined weather thresholds, threats or concerns.
- Notifications sent through both visual and audible delivery.
- Notification locations may be set by: point, radius, Zip Code.

### Severe Weather Alerting

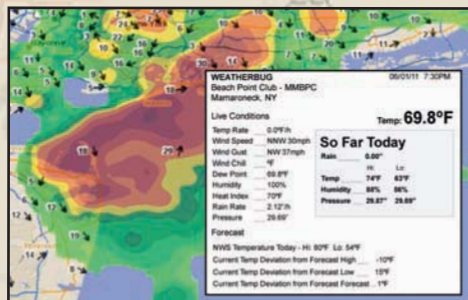
- The WeatherBug Dangerous Thunderstorm Alert (DTA) is issued when there is increased potential for: lightning strikes, heavy rain rates, high winds, hail, and tornadic activity.
- View NWS-issued warnings, watches, and advisories with alert summaries.
- WeatherBug Protect alerts add another layer of safety above and beyond NWS-issued alerts.

### Custom Views and Slideshow

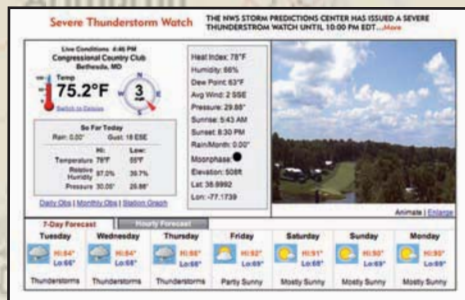
- Save custom views that include the preferred map extent and active data layers.
- Quickly switch between views for rapid visualization of changing weather conditions.
- Custom views can be grouped into a slideshow presentation.

### Tropical and Severe Weather






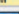
- Track hurricanes, flood conditions, lightning, wind, major snow forecast and accumulation areas.
- Plot tropical model forecast lines/data from National Hurricane Center with 12-hour forecast updated 4 times per day.



Display interactive data like current radar with wind speed and direction. Scroll-over information includes station points and alerts.



With a click, the station dashboard provides users a comprehensive view of all weather station observations.

7-Day Forecast		Hourly Forecast				
Updated: 9:00 PM Tuesday, January 06, 2009						
Time	Conditions	Sky Cover	Chance of Precip.	Heat Index	Wind Chill	Wind
Wednesday, January 07, 2009						
4 am		34° F	100%	34%	20° F	From NE 3-
5 am		34° F	100%	34%	20° F	From NE 3-
6 am		34° F	100%	34%	20° F	From NE 3-
7 am		34° F	100%	34%	20° F	From NE 3-
Sunrise: 7:27 AM						
8 am		34° F	100%	35%	20° F	From NE 3-
9 am		35° F	100%	35%	21° F	From NE 3-

Access to 7-day and hourly forecasts helps you make more precise decisions.