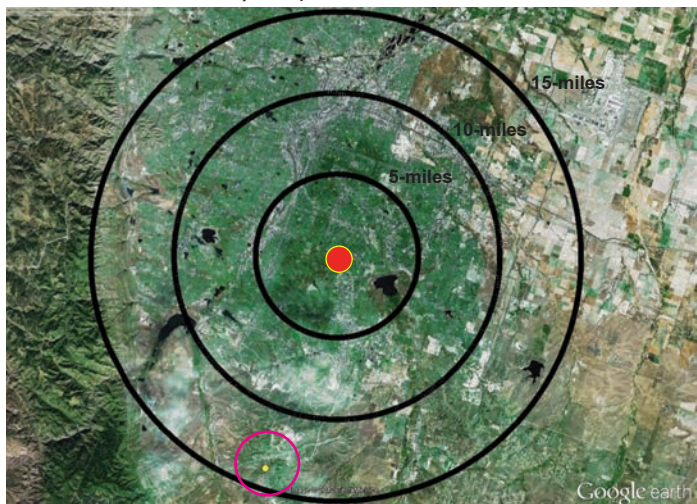


Safety Solutions In Action

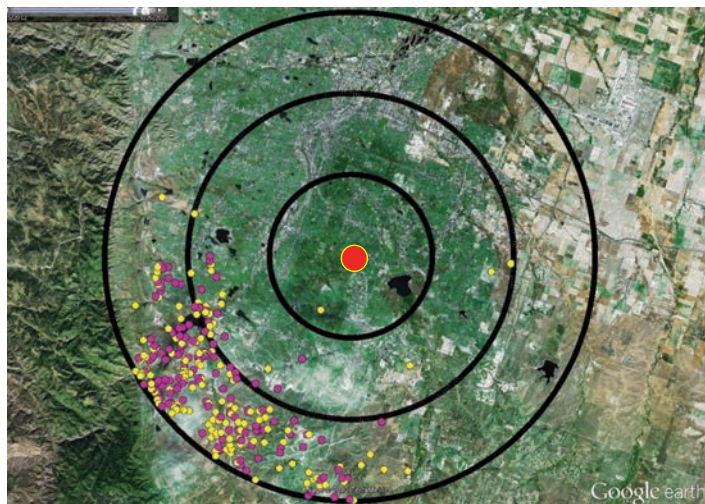
WHAT: A man was struck by lightning and injured leaving a synagogue.

WHERE: Hebrew Educational Alliance, Denver, CO

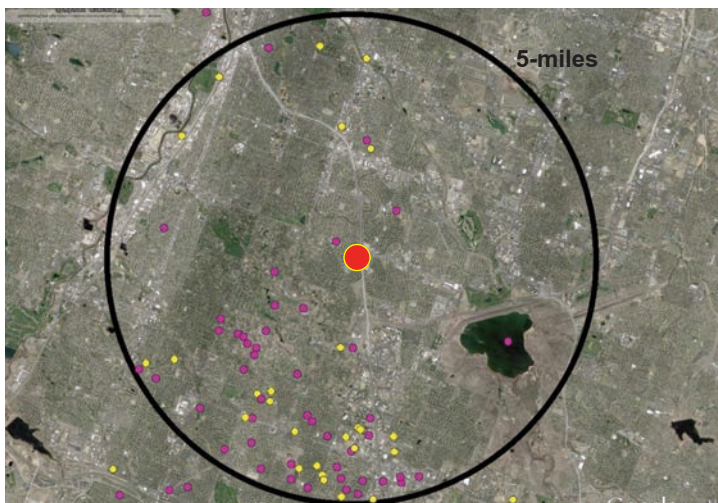
WHEN: Wednesday, September 26, 2012



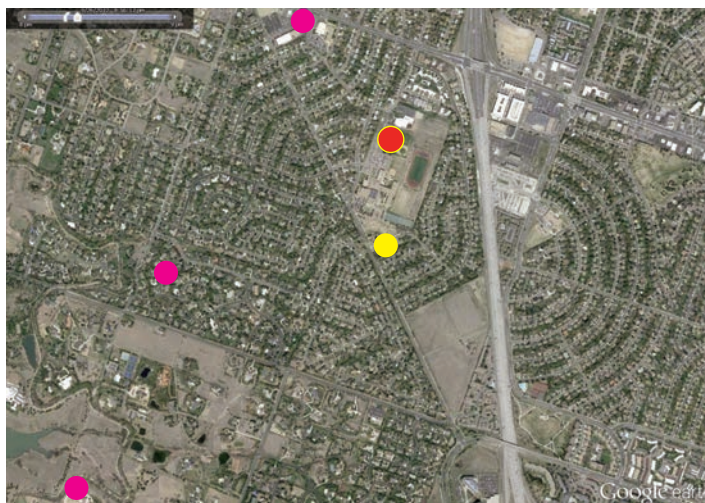
7:24 PM – Cloud-to-ground lightning strike (yellow) detected within 15 miles of synagogue. 1 hour and 26 minutes notice of lightning is in the area.



8:09 PM – Cloud-to-ground lightning inside 5 miles; cloud-to-ground and in-cloud lightning (magenta dots) within 10 miles. Approximately 41 minutes prior to injury.



8:40 - 8:50 PM – In-cloud pulses and cloud-to-ground strikes continue to be detected within an unsafe range of the synagogue approximately 10 minutes prior to injury.



8:50:07 PM – Cloud-to-ground lightning strike (yellow dot) injures man in field near synagogue.

WeatherBug offered clients in the area 1 hour and 26 minutes advanced warning.
No National Weather Service warning was in effect at any time.

This Event Demonstrates How Advanced Warning Can Help Save Lives

This event demonstrates the tremendous value of TOTAL LIGHTNING. Total lightning data is critical and WeatherBug is the only provider that can detect TOTAL LIGHTNING at this level of precision.

WeatherBug equips management and personnel with a turnkey solution that constantly monitors dangerous weather conditions and issues customized alerts in real time. WeatherBug provides on-site detection and advanced alerts for lightning and severe weather to multiple locations via multiple methods — mobile devices, computers, indoor alerting devices and to outdoor alerting systems.